

# Test Report

No. CANML1717999802

Date: 19 Sep 2017

Page 1 of 3

HUGO WAY CO.,LTD.

ROOM 1,4/F XINHUA WEST ROAD,XIAO LAN TOWN,ZHONGSHAN CITY,GUANGDONG PROVINCE,CHINA

The following sample(s) was/were submitted and identified on behalf of the clients as : Brass Material

SGS Job No. : GZIN1709043261PC - GZ  
 Date of Sample Received : 08 Sep 2017  
 Testing Period : 08 Sep 2017 - 19 Sep 2017  
 Test Requested : Selected test(s) as requested by client.  
 Test Method : Please refer to next page(s).  
 Test Results : Please refer to next page(s).

Result Summary :

Test Requested	Conclusion
Entry 27 of Regulation (EC) No 552/2009 amending Annex XVII of REACH Regulation (EC) No 1907/2006 (previously restricted under Directive 94/27/EC and 2004/96/EC)– Nickel release	PASS

Signed for and on behalf of  
 SGS-CSTC Standards Technical Services Co., Ltd. Guangzhou Branch



Zm guan  
 Approved Signatory



# Test Report

No. CANML1717999802

Date: 19 Sep 2017

Page 2 of 3

Test Results :

Test Part Description :

Specimen No.	SGS Sample ID	Description
SN1	CAN17-179998.002	Brassy metal

Remarks :

- (1) 1 mg/kg = 0.0001%
- (2) MDL = Method Detection Limit
- (3) ND = Not Detected ( < MDL )
- (4) "-" = Not Regulated

**Entry 27 of Regulation (EC) No 552/2009 amending Annex XVII of REACH Regulation (EC) No 1907/2006 (previously restricted under Directive 94/27/EC and 2004/96/EC)– Nickel release**

Test Method : As specified in EN 1811: 2011 +A1:2015, Analysis was performed by ICP-OES.

Test Item(s)	Limit	Unit	MDL	002
Sample Area	-	cm <sup>2</sup>	-	8.07
Volume of Test Solution	-	mL	-	8.07
Nickel Release - Trial 1	0.50	µg/cm <sup>2</sup> /week	0.10	ND
Nickel Release - Trial 2	0.50	µg/cm <sup>2</sup> /week	0.10	ND
Nickel Release - Trial 3	0.50	µg/cm <sup>2</sup> /week	0.10	ND

Comment

**PASS**

Notes :

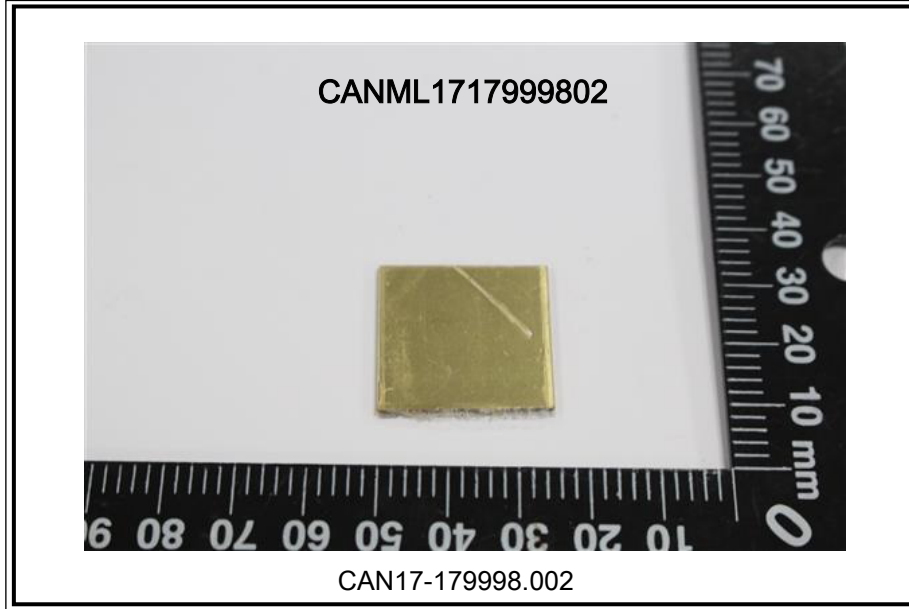
- (1) Max. limit specified by entry 27 of Regulation (EC) No 552/2009 amending Annex XVII of REACH Regulation (EC) No 1907/2006 (previously restricted under Directive 94/27/EC and 2004/96/EC).

Comments are given according to Annex A of EN1811:2011+ A1:2015 as below:

Type of sample	Nickel Release (µg/cm <sup>2</sup> /week)	
	PASS	FAIL
Article with Nickel release limit of 0.5µg/cm <sup>2</sup> /week	<0.88	≥ 0.88
Article with Nickel release limit of 0.2µg/cm <sup>2</sup> /week	<0.35	≥ 0.35



Sample photo:



SGS authenticate the photo on original report only

\*\*\* End of Report \*\*\*